

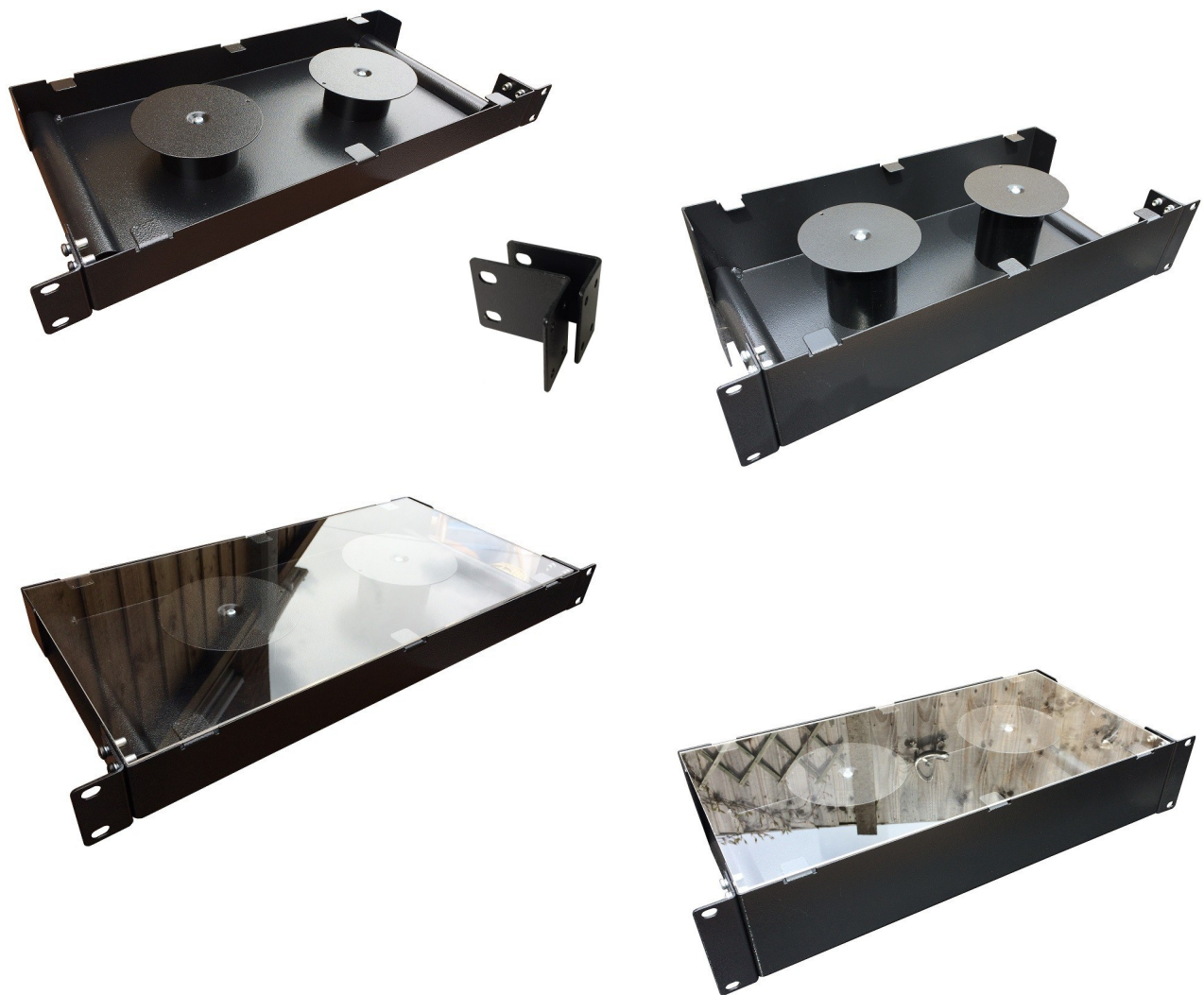
FIBRE WINDING TRAYS

Technical Information



Features:

- ◆ Universal 19" mounting
- ◆ ETSI mounts included
- ◆ Excellent design featuring improved fibre protection
- ◆ Clear protective lid panel seated on top of tray



Part Numbers

Item	Description	Height	Colour
798153	Fibre Winding Tray 2 Spool Clear Lid	1U	Black
796809	Fibre Winding Tray 2 Spool Clear Lid	2U	Black